

30265 Conifer Road

Floor Plan & Interior Room Dimensions

*All measurements are approximate and not guaranteed

Kitchen – 10' 9" x 13' 8"

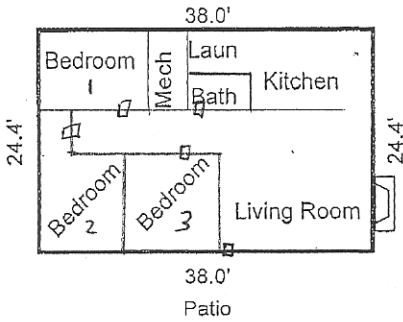
Living Room – 15' x 12' 6"

Bedroom 1 – 10' 9" x 13'

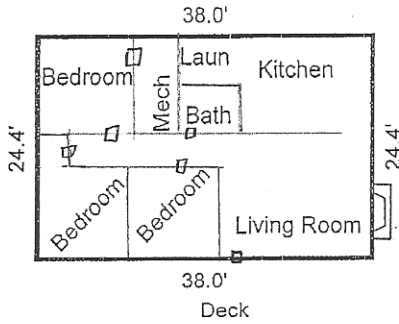
Bedroom 2 – 9' x 10' (plus 2' by door for closet)

Bedroom 3 – 9' x 10'

Unit #B- Lower floor



Unit #A - Upper floor



Sketch by Apex IV Windows™

AREA CALCULATIONS SUMMARY			
Code	Description	Size	Totals
GLA1	Unit #A - Upper floo	927.20	
	Unit #B - Lower floo	927.20	1854.40
TOTAL LIVABLE		(rounded)	1854

LIVING AREA BREAKDOWN		Subtotals
Breakdown		
Unit #A - Upper floo		
24.4 x 38.0		927.20
Unit #B - Lower floo		
24.4 x 38.0		927.20
2 Areas Total (rounded)		1854